



**Glanville**  
TRENCHLESS

Smarter  
Solutions  
Below Ground:  
The No-Dig  
Advantage





**Glanville**  
TRENCHLESS



# Glanville Environmental Trenchless Division

Glanville Trenchless offers advanced trenchless (no-dig) solutions for drainage and sewer systems across the UK. Our methods minimise excavation, reduce disruption, and deliver long-lasting results for both domestic and commercial clients. We specialise in difficult-to-access and sensitive environments, using innovative techniques and global technology partnerships to ensure efficient, sustainable outcomes.

## Key Services:

### Manhole rehabilitation

The process of repairing, upgrading, or sealing manhole structures to restore functionality and extend service life.

### Lateral Pipe Connection Repairs “Top Hats”

The rehabilitation of defective lateral/connections to the main sewer without excavation.

### Cured-In-Place Pipe (CIPP) Lining

This is a resin-impregnated lining tube installed within an existing gravity or pressure pipeline which is then cured by Hot water, steam, UV and LED cure to create a close-fit, structural “pipe within a pipe.”

### Pressure Lining

Deteriorating pressure and gravity mains. Our pressure liner solutions restores performance and extends asset life with minimal disruption.

### Mechanical Internal Pipe Seals

Designed to repair leaking joints and localised damage in a wide range of pipe materials these are installed either remotely or by man-entry.

### Robotic Cutting

Remote precision cutting for the re-opening of lateral connections and the removal of concrete, roots, intruding connections, rebar corrosion and other blockages in pipelines.

Other services offered by Glanville Trenchless

- Pitch Fibre Re-Rounding
- Slip Lining
- Pipe Bursting
- Horizontal Directional Drilling (HDD)
- Grout/PU Flooding System

### Why Trenchless?

- Minimal surface disruption and faster turnaround times
- Safe and effective for remote or restricted-access sites
- Reduces cost by avoiding road/pavement reinstatement
- Environmentally friendly – up to 99% lower CO2 emissions with UV curing
- Durable results with a 50+ year pipe



TRENCHLESS





# Manhole Rehabilitation – Cost-Effective. Trenchless. Long-Term.

Strengthen failing manholes without excavation. Our spray-applied sealing solution restores integrity, stops infiltration, and extends asset life – safely and efficiently.

## What is Manhole Rehabilitation?

This is the process of repairing and upgrading a manhole/access chamber that is suffering from corrosion, infiltration or structural strength and/or integrity. They are the most important component of a sewer system as they provide access to the network.

## Methodology:

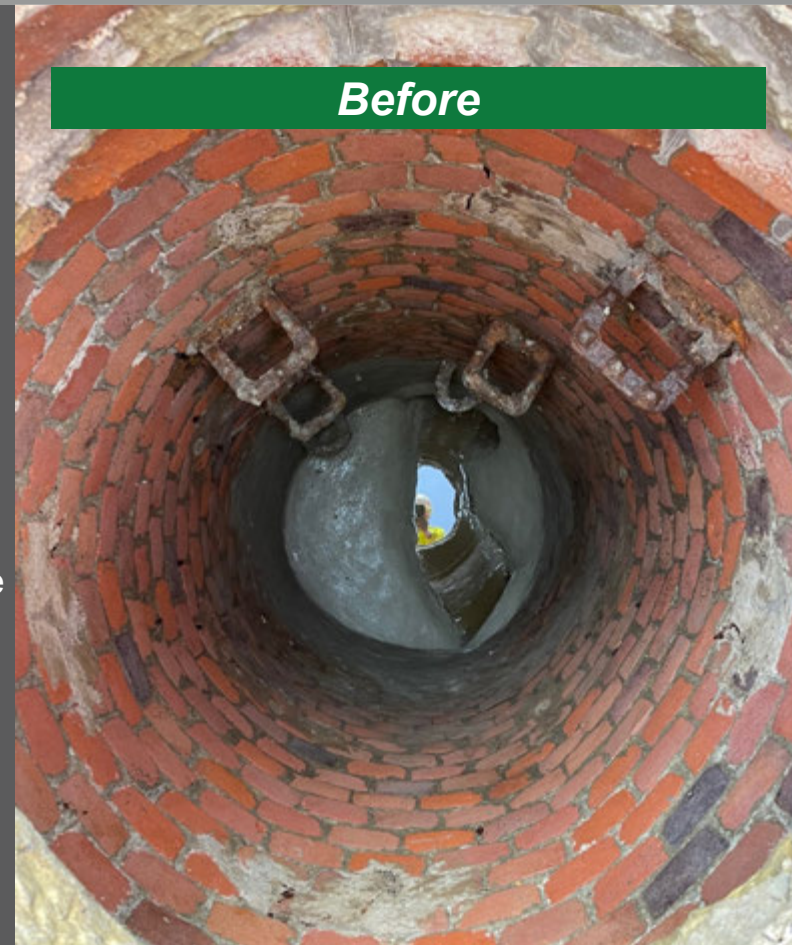
We apply high-performance grout to manhole walls using advanced wet spray techniques. Each coat is 5–10mm thick, applied in multiple layers for superior strength and sealing.

## Applications:

- Manholes
- Wet Wells
- Gravity Pipes
- Tanks
- Culverts

## Key Benefits:

- Stops infiltration & ex-filtration
- Reduces odours and ground movement
- Resists biogenic sulphuric acid corrosion (BSC)
- Lowers maintenance costs
- Independently tested for long term durability
- Helps meet environmental compliance



*Before*



*During*



*After*





## Top-Hat Technology – Durable, No-Dig Solution.

Glanville Trenchless delivers fast, long-lasting, lateral and short-section sewer repairs using advanced Top Hat technology - no excavation required

### What are Top Hats?

Lateral connection repair (Top Hats) are localised repairs to an incoming connection. This may be a structural repair or part of a leak tight lining solution for dealing with infiltration and ex-filtration.

### Methodology:

A “Top Hat” seal (Resin Impregnated CIPP Material) is positioned on a packer mounted on a robotic system (or manually with rods). Once in place the “T” packer inflates extending the bladder up the lateral and sealing the material against the pipe wall. Once cured the packer is deflated and removed from the pipe leaving a long lasting repaired connection fully structural and watertight.

### Application:

- Gravity sewers and effluent pipelines
- Lateral-to-main connections
- Pipe sizes: 100-600mm
- Lateral sizes: 100-150mm
- Up to 80m from access point

### Key Benefits:

- Seals “T”, “Y”, and custom bends
- Handles difficult access and shapes
- Access via main line
- CP655-approved materials
- Heat curing for fast, consistent results

*“The durable, no-dig solution.”*



LATERAL CONNECTION &  
SHORT SEWER REPAIRS

Case studies available  
Call: 01752 690400  
Email: [trenchlessinfo@glanvilleltd.co.uk](mailto:trenchlessinfo@glanvilleltd.co.uk)





# Hot Cure Lining

Glanville Trenchless delivers a powerful, no-dig solution for deteriorating sewer pipes. Our hot cure lining reinforces pipelines from the inside, restoring strength, flow, and reliability, without excavation.

## What is Hot Cure Lining?

A seamless, structural pipe within a pipe that extends asset life by many decades and protects the environment, all whilst minimising disruption to the local environment.

## Methodology:

1. CCTV Survey – Assess damage and locate faults.
2. High-Pressure Cleaning – Remove roots, scale & debris.
3. Liner Installation – A Flexible resin-saturated liner is inserted using air or water then expanded to fit tightly to the walls of the host pipe.
4. Hot water or steam then activates the resin which hardens forms the new pipe.
5. Finally a CCTV check – To verify full seal and structural integrity.

## Key Benefits:

- Long term durability
- Proven no-dig technique
- Minimal disruption
- Improved flows
- Leak and root resistance
- Lowers maintenance cost
- Chemical and corrosion resistance
- Minimal loss of internal pipe diameter

*“Our hot cure lining system rehabilitates pipelines without the need for costly excavations.”*

CURED-IN-PLACE PIPE  
(CIPP) LINING



Case studies available  
Call: 01752 690400  
Email: [trenchlessinfo@glanvilleltd.co.uk](mailto:trenchlessinfo@glanvilleltd.co.uk)





# UV Lining

Glanville Trenchless offers high-performance UV pipe lining as a durable, trenchless solution for rehabilitating aging or deteriorated pipelines.

## What is UV Lining?

Built for demanding environments. Our UV liners restore strength, seal integrity, and flow capacity, without the need for excavation or major disruption.

## Methodology:

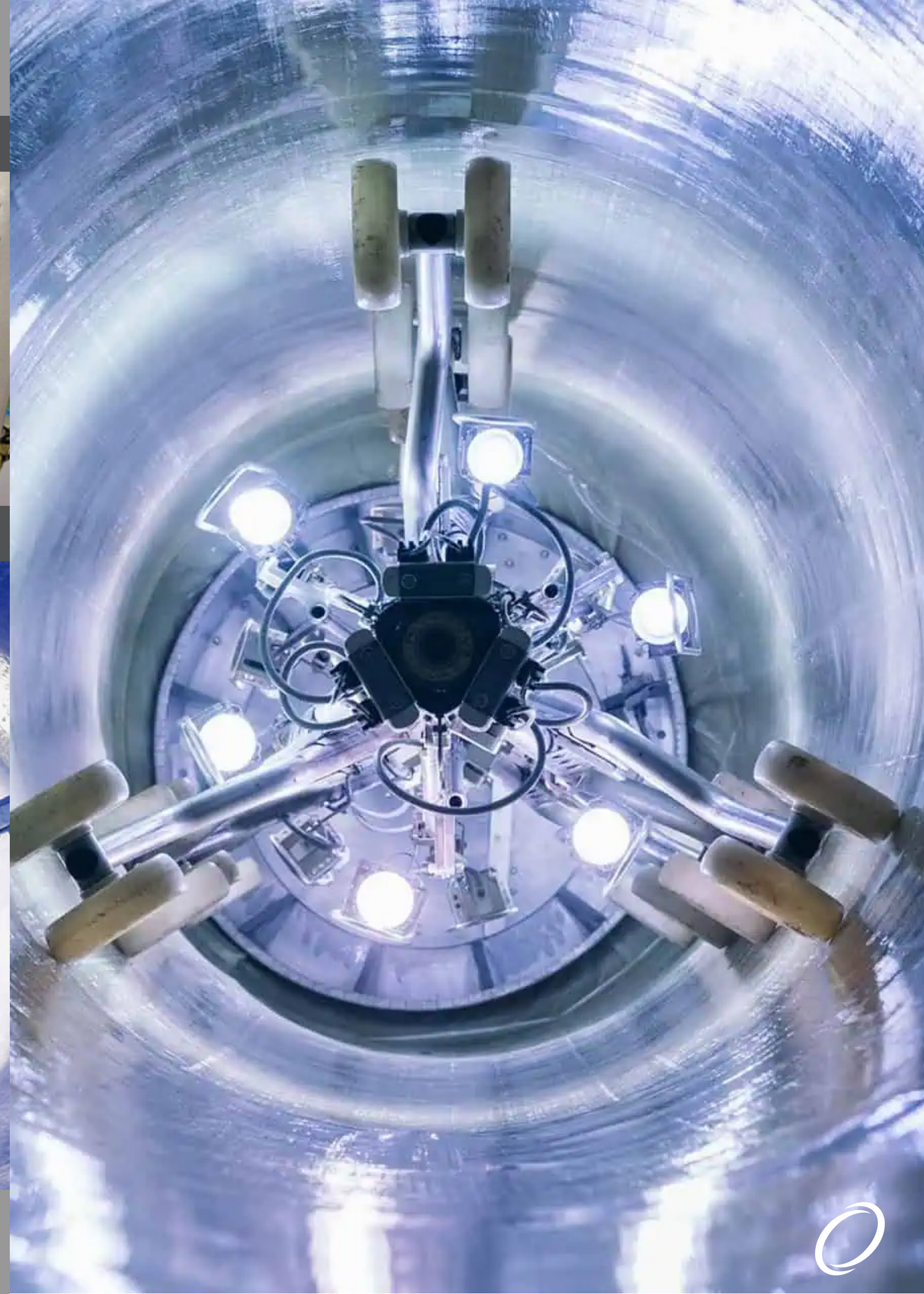
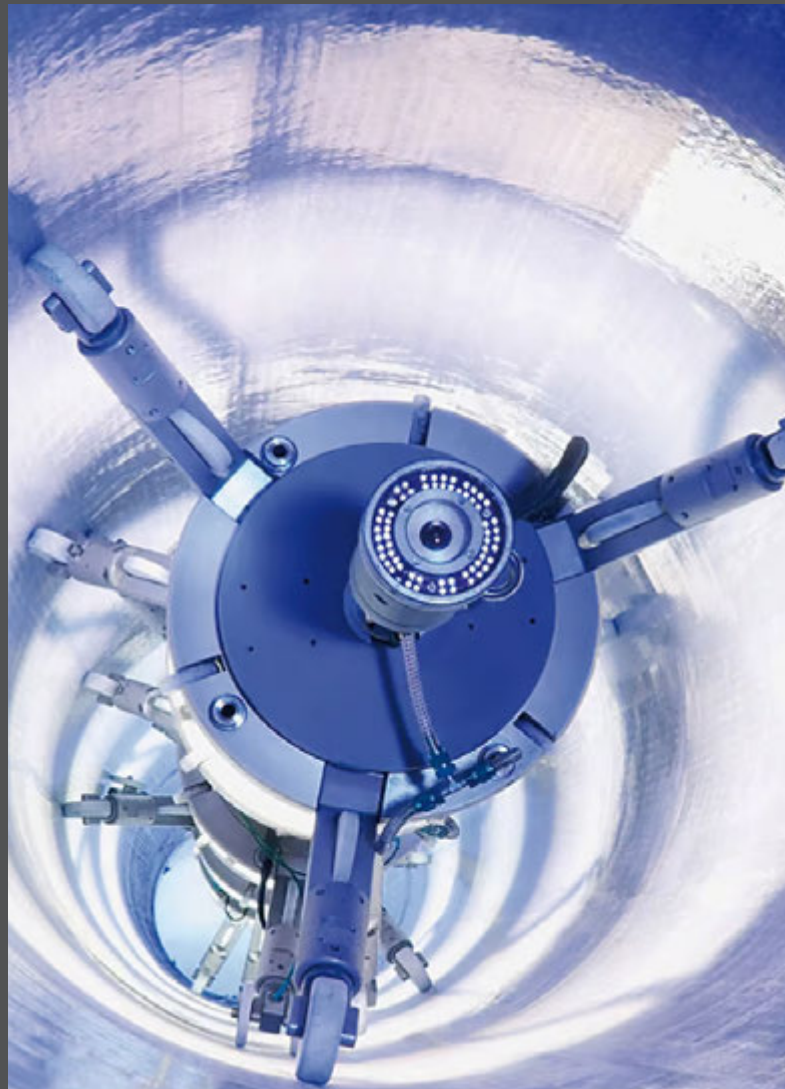
1. CCTV Survey
2. Inspection and clean pipeline
3. Pull in UV Liner with winch
4. Fix End Caps and Inflate to close fit with host pipe
5. Pull through the UV Light Train with CCTV to cure resin and record finished pipe.

## Application:

- Designed for pressure and gravity mains
- Lightweight for quick handling and fast installation
- High tensile strength prevents deformation
- UV curing accelerates project turnaround
- Low-impact materials for eco-conscious delivery

## Key Benefits:

- 100-year design life
- Reinforces structural strength
- Resistant to harsh chemicals
- No excavation required
- Fast curing



CURED-IN-PLACE PIPE  
(CIPP) LINING

Case studies available  
Call: 01752 690400  
Email: [trenchlessinfo@glanvilleltd.co.uk](mailto:trenchlessinfo@glanvilleltd.co.uk)





# LED Lining

Glanville Trenchless delivers next-gen LED Lining, a rapid, trenchless CIPP solution ideal for laterals, mains, and small-diameter wastewater pipes.

## What is LED Lining?

LED smart technology systems cure resin instantly using light, not heat, meaning faster turnaround, improved safety, and lower emissions.

## Methodology:

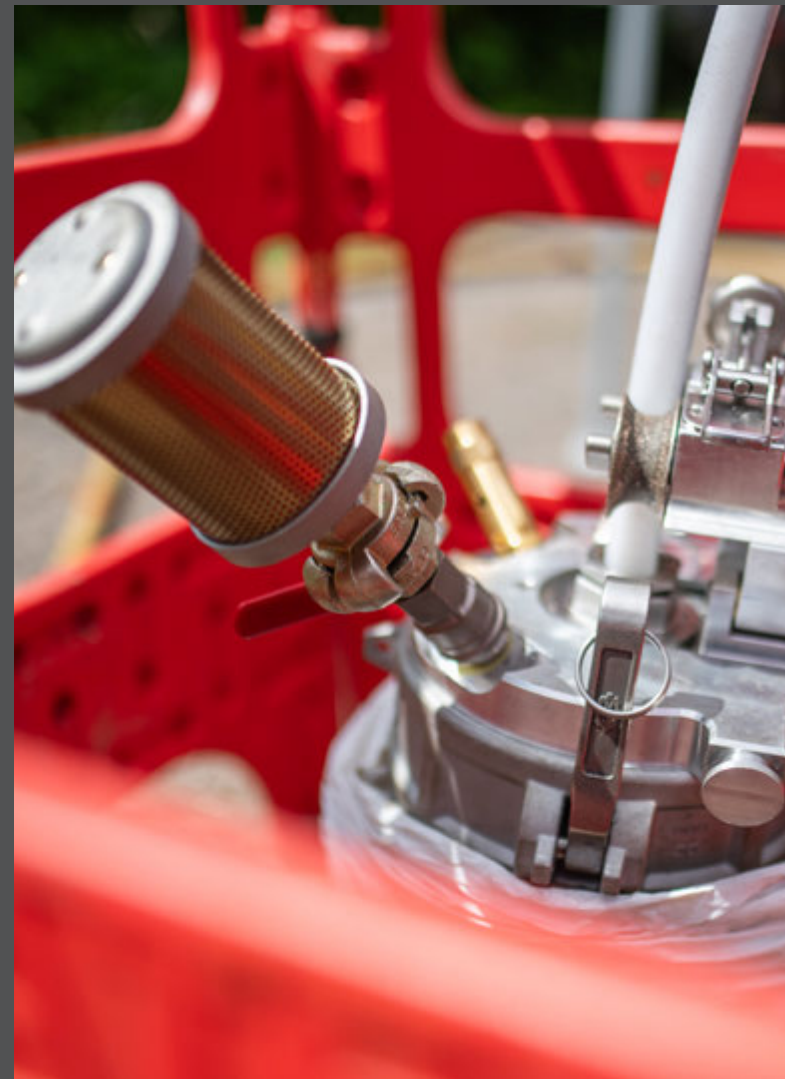
A light-reactive liner is inserted into the pipe. A precision LED head is then pulled through at up to 0.3m - 1.65m/Min, instantly curing the resin and bonding the liner to the pipe walls.

## Applications:

- Gravity Sewers
- Trade Effluent pipes
- Laterals

## Key Benefits:

- Styrene free resin
- Small footprint
- Built in quality control
- Compact and efficient
- Copes with bends
- Diameter changes



CURED-IN-PLACE PIPE  
(CIPP) LINING

Case studies available  
Call: 01752 690400  
Email: [trenchlessinfo@glanvilleltd.co.uk](mailto:trenchlessinfo@glanvilleltd.co.uk)





# Structural Localised Repairs 'Patching'

Glanville Trenchless provides patch lining for localised sewer and drainage pipe defects, with no digging, delays, or disruption.

## What is Patching?

Localised structural repair systems (Patches) are used to address point service problems or individual structural defects within a pipeline as opposed to a full length pipeline rehabilitation.

## Methodology:

A resin-soaked glass matting is positioned and pressed into place using an inflatable packer. It cures in place, restoring strength and sealing the defect, all without stopping flows.

## Applications:

- Gravity sewers
- Trade effluent lines
- Point repairs prior to full length lining

## Key Benefits:

- No excavation = minimal disruption
- Low emissions and fuel usage
- Reinforces structure, blocks roots and leaks
- Restores flow capacity
- Economic alternative to full length lining
- Less time on site



*From 'Standard' Patches*



*To Challenging Larger Patches*



CURED-IN-PLACE PIPE  
(CIPP) LINING

Case studies available  
Call: 01752 690400  
Email: [trenchlessinfo@glanvilleltd.co.uk](mailto:trenchlessinfo@glanvilleltd.co.uk)





# Pressure Pipe Lining

Glanville Trenchless offers Pressure Pipe Lining, a high performance solutions for structural repairs to pressure and gravity pipes.

## What are Pressure Pipe Liners (CIPP)?

A PU-coated, fibreglass-reinforced liner impregnated with vinyl ester resin, delivering strength, flexibility, and chemical resistance. Installed via existing access points and cured in place, all without digging.

## Methodology:

1. CCTV, clean and assess
2. Liner pulled in by winch if UV cured
3. Inserted via water if hot cure by eversion.
4. Positioned and cured with either hot water or UV Light train
5. Post CCTV Survey

## Application:

- Pressure pipes carrying liquids or gas
- Rising/ pumping mains

## Key Benefits:

- Exceptional Strength
- Quick return to service
- Flexible Fit
- Durability
- Efficient Installation
- Reduced footprint



PRESSURE PIPE  
LINING (CIPP)

Case studies available  
Call: 01752 690400  
Email: [trenchlessinfo@glanvilleltd.co.uk](mailto:trenchlessinfo@glanvilleltd.co.uk)





# Flexible Liners

Glanville Trenchless offers a no-dig solution for deteriorating pressure and gravity mains. Our lining solutions restore performance and extend asset life – with minimal disruption.

## What are Pressure Pipe Liners with an inserted hose?

This is self supporting liner with a fabric core of aramid fiber coated with thermoplastics (PE) which once inserted into the pipe is brought into shape by compressed air and remains freely in the host pipe.

### Methodology:

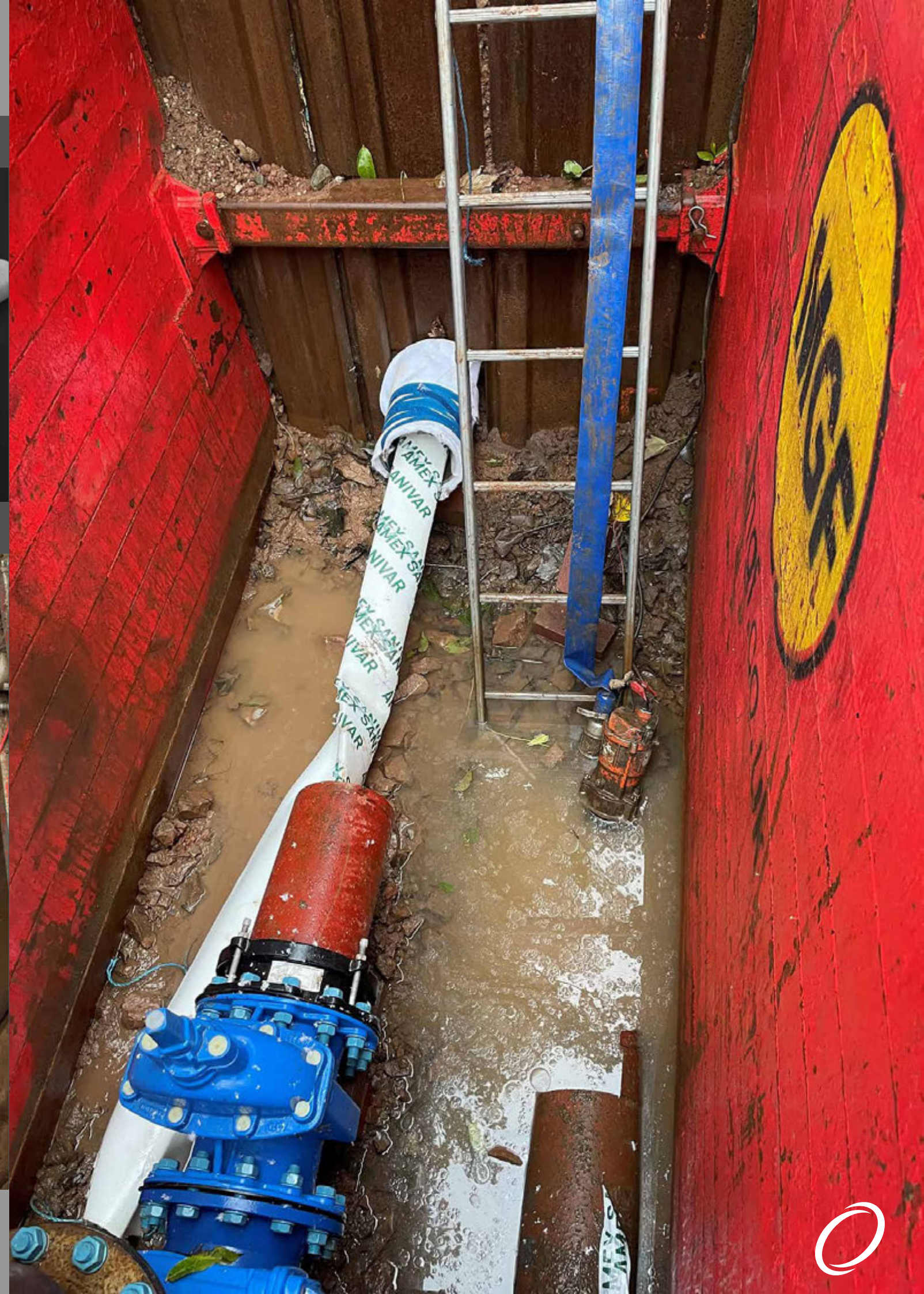
1. Isolate and Clean host pipe
2. Pull folded liner through existing pipe normally with winch
3. Mount and attach to the bespoke connectors
4. Pressure test then integrate back into the pressurised system with fitting piece

### Applications:

- Pressure mains (Inc. Vertical pipes)
- Rising mains
- Fire mains
- Industrial pipelines

### Key Benefits:

- Durable
- Improved Flow
- Cost Effective
- Custom Options
- Under roads & buildings
- Restricted sites



PRESSURE PIPE  
LINING (CIPP)

Case studies available  
Call: 01752 690400  
Email: [trenchlessinfo@glanvilleltd.co.uk](mailto:trenchlessinfo@glanvilleltd.co.uk)





# Mechanical Internal Pipe Seals

Glanville Trenchless uses stainless steel and EPDM sealing technology to deliver fast, durable, chemical-free repairs inside pipelines. Ideal for stopping infiltration, sealing cracks, or reinforcing joints, this method allows for precise repairs without excavation.

## What are Internal Mechanical Seals?

Stainless steel and EPDM rubber components with no resins

## Methodology:

1. Pipe is cleaned and surveyed
2. Seal sleeve is positioned at the defect
3. Mechanically expanded to form a tight seal
4. No curing or chemicals – immediate return to service

## Applications:

- Isolated defects or infiltration points
- leaking joints in large-diameter pipes
- Pressure-tight sealing inside live systems
- Concrete, clay, plastic, steel and cast-iron pipes

## Key Benefits:

- Quick installation
- No chemicals
- Immediate use
- Durable design
- Tailored repairs
- Versatile fit
- Low carbon
- 50+ year design life



PRESSURE PIPE  
LINING (CIPP)

Case studies available  
Call: 01752 690400  
Email: [trenchlessinfo@glanvilleltd.co.uk](mailto:trenchlessinfo@glanvilleltd.co.uk)





# Robotic Cutting

Glanville Trenchless uses robotic cutting systems to remove internal pipe blockages and prepare pipelines for repair or lining, all without excavation.

## What is Robotic Cutting?

These camera guided precision cutters operate remotely from above ground, offering a faster, safer, and cleaner alternative to traditional methods.

## Methodology:

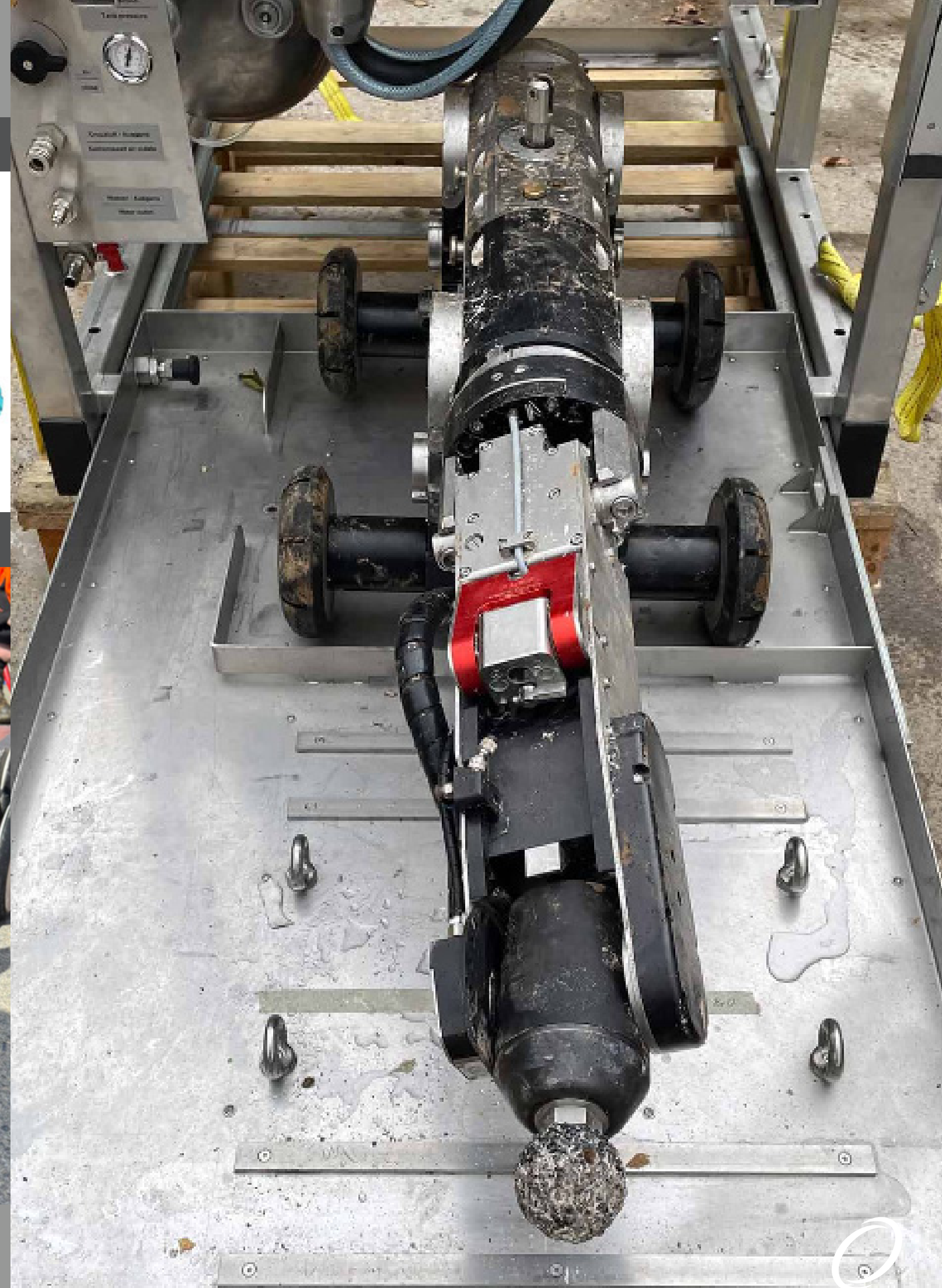
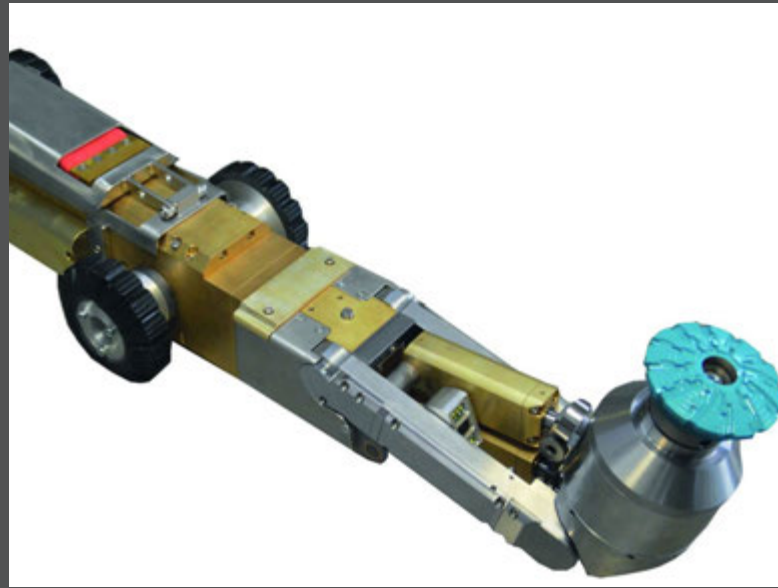
Robotic cutters are placed into the pipe through an access chamber. Using onboard cameras and location tools, operators remotely steer the robot to the defect location where it removes the obstruction or defect with the milling cutter attachment all controlled from above ground.

## Applications:

- Foul, storm & combined sewers
- Root and concrete removal
- Pre-lining preparation
- Lateral re-opening

## Key Benefits:

- Efficient
- Accurate
- Safe
- Cleaner repairs
- Environmentally friendly



ROBOTIC CUTTING  
SYSTEMS

Case studies available  
Call: 01752 690400  
Email: [trenchlessinfo@glanvilleltd.co.uk](mailto:trenchlessinfo@glanvilleltd.co.uk)



# Leading the Southwest in Civil Engineering, Drainage & Environmental Solutions

## About Glanville Environmental

Delivering excellence since 1983, Glanville Environmental is the South West's trusted name in drainage and civil engineering. Now part of the Adler & Allan Group, we bring the strength of a national network with the responsiveness of a local team.

From emergency response to large-scale infrastructure projects, our 200+ specialists work from six strategic depots to provide fast, efficient, and innovative solutions, all backed by over 40 years of proven expertise.

## What We Do:

### Civil Engineering & Drainage:

- From the ground up and below it we manage every stage of your project with precision.
- Sewer installation, repair & rehabilitation
- Manhole construction & refurbishment
- Pump station & CSO installations
- Above & below ground drainage
- Award-winning No-Dig & Trenchless repairs

### Environmental Services:

- Keeping communities, businesses, and environments safe and operational.
- High-pressure water jetting & deep cleaning
- Gully cleansing & septic tank emptying
- Liquid waste collection & transport
- Advanced CCTV surveys & mapping
- Geospatial surveying & asset management
- Confined space rescue services
- Railway infrastructure support
- Fencing & remedial landscaping
- Workshop & fleet maintenance
- Specialist training through our Training Academy

## Our Core Services

### Why Choose Us?

#### Proven track record

Four decades delivering complex projects on time and on budget.

#### One team, all solutions

Eight specialist divisions working seamlessly together.

#### Safety first

Industry-leading safety standards in every job we undertake.

#### Sustainability at our core

Innovative techniques that protect people, assets, and the environment.

Glanville Environmental – Where expertise meets innovation to deliver reliable, sustainable solutions every time.

## Who We Work With

Working collaboratively with our key partners and supply chain, Glanville Environmental delivers innovative, high-quality solutions for vital wastewater enhancement and improvement framework schemes across the South West's wastewater network.





# Glanville

T R E N C H L E S S

[www.glanvilletrenchless.com](http://www.glanvilletrenchless.com)

T: 01752 690400 | E: [trenchlessinfo@glanvilleltd.co.uk](mailto:trenchlessinfo@glanvilleltd.co.uk)

Head Office, Unit 2 Central Court Central Avenue, Lee Mill Industrial Estate, Ivybridge, Devon,  
PL21 9PE