

Glanville

ENVIRONMENTAL

THE LEADING CONTRACTOR
IN THE SOUTH WEST

CONSTRUCTION
CIVIL ENGINEERING
DRAINAGE SOLUTIONS &

PROUD TO BE A PEOPLES COMPANY FOR OVER 40 YEARS.

A MARKET LEADER IN THE SOUTH WEST.

Glanville Environmental stands as a well-established, family-run drainage and civil engineering contractor, operating successfully throughout the South West since 1983.

Our expertise encompasses comprehensive project management of civil engineering endeavours from inception to completion. This includes adept coordination and execution of both above and below-ground drainage and sewer works, sewer rehabilitation, manhole construction, drain and sewer installations and repairs, as well as pump station and CSO installations.

Renowned for our proficiency in high-pressure water jetting, gully cleansing, liquid waste movement, and septic tank emptying, we offer a comprehensive suite of services for wastewater management. Complementing these, our offerings extend to encompass CCTV surveys, mapping, confined space search and rescue operations, and railway infrastructure projects.

With a workforce exceeding 200 employees operating across six strategically located depots and offices, Glanville Environmental serves as the cornerstone of the eight Glanville divisions.

Our continued evolution is steered by our commitment to tackling ambitious projects with a blend of exceptional talent from our workforce and innovative methodologies. As a market leader in the region within the drainage sector, Glanville Environmental takes immense pride in delivering professional, efficient, and cost-effective services to both commercial enterprises and domestic clients throughout the South West of England.





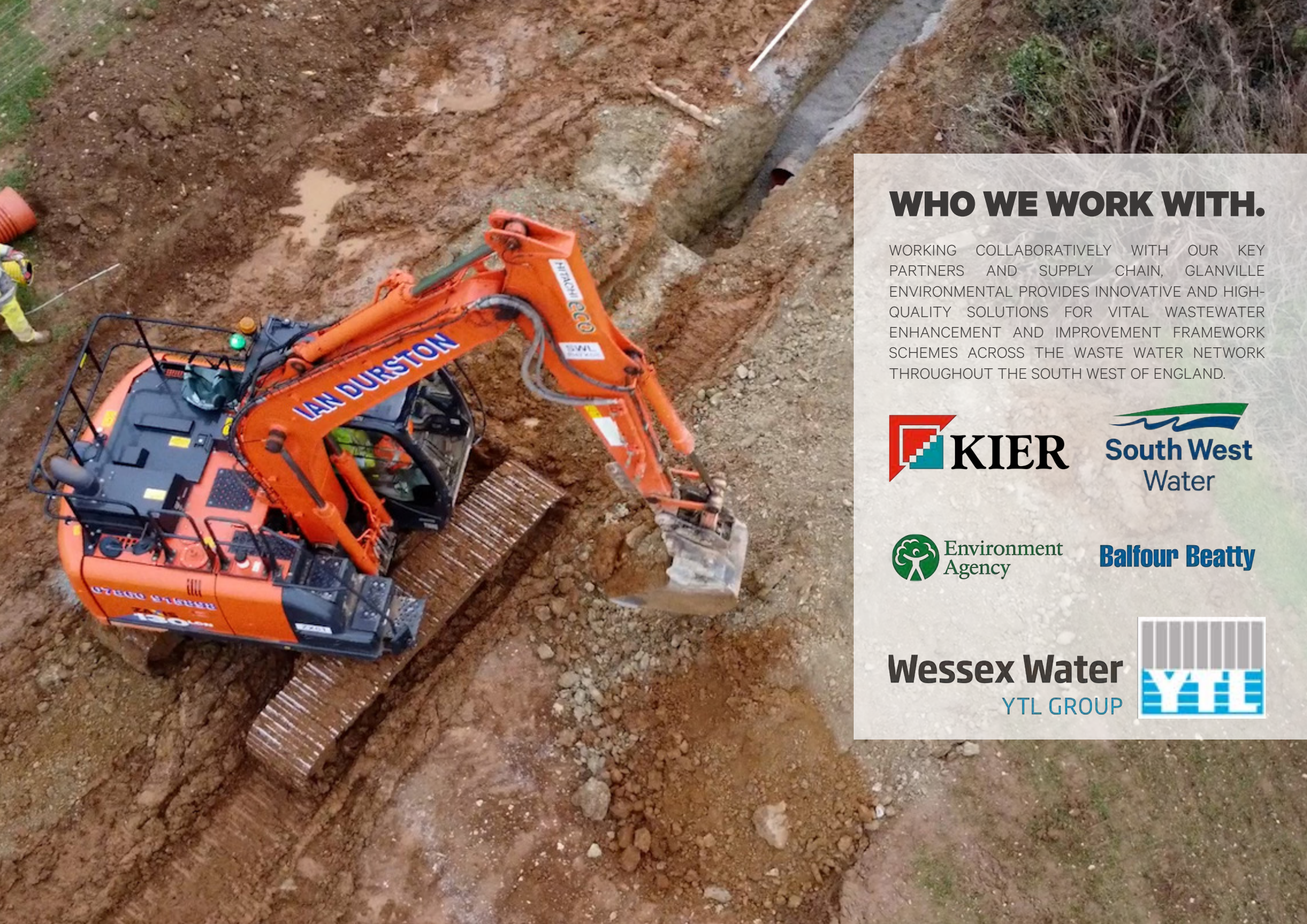
DELIVERING

GREATNESS FOR **40** YEARS.

The image is a composite of two photographs. The top photograph shows a large, red, cylindrical pipe lying horizontally on several concrete blocks. The pipe's interior is visible, showing a smooth, light-colored lining. The ground around the pipe is dirt and gravel. In the background, there are green trees and a yellow excavator. The bottom photograph shows a similar scene but from a different angle, looking down a long line of red pipes laid out on concrete blocks. In the distance, two workers in orange safety gear are visible near the end of the pipe line. The background consists of a dense line of trees.

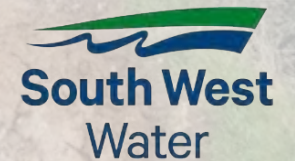
FROM START TO FINISH.

DRAWING UPON FOUR DECADES OF UNPARALLELED EXPERTISE AND KNOWLEDGE IN THE FIELDS OF DRAINAGE AND CIVIL ENGINEERING, OUR COMMITMENT IS TO ENSURE THE DELIVERY OF EXEMPLARY WORKMANSHIP FROM INCEPTION TO COMPLETION. OUR COMPREHENSIVE CRADLE-TO-GRAVE SERVICE ENCOMPASSES METICULOUS PROJECT MANAGEMENT, SEAMLESS COORDINATION, INNOVATIVE DESIGN, DILIGENT CONSTRUCTION, AND TIMELY DELIVERY FOR BOTH ABOVE AND BELOW-GROUND DRAINAGE SCHEMES.



WHO WE WORK WITH.

WORKING COLLABORATIVELY WITH OUR KEY PARTNERS AND SUPPLY CHAIN, GLANVILLE ENVIRONMENTAL PROVIDES INNOVATIVE AND HIGH-QUALITY SOLUTIONS FOR VITAL WASTEWATER ENHANCEMENT AND IMPROVEMENT FRAMEWORK SCHEMES ACROSS THE WASTE WATER NETWORK THROUGHOUT THE SOUTH WEST OF ENGLAND.



Balfour Beatty

Wessex Water
YTL GROUP





QUALITY.

AMBITION.

INNOVATION.

COLLABORATION.

COMMUNICATION.

OUR DIVISIONS.

From start to finish, we get the job done.



Glanville
CIVILS



Glanville
TRENCHLESS



Glanville
CLEANSING



Glanville
CCTV



Glanville
GEOSPATIAL



Glanville
TRAINING



Glanville
PROPERTIES



Glanville
WASTE MANAGEMENT

OVERVIEW

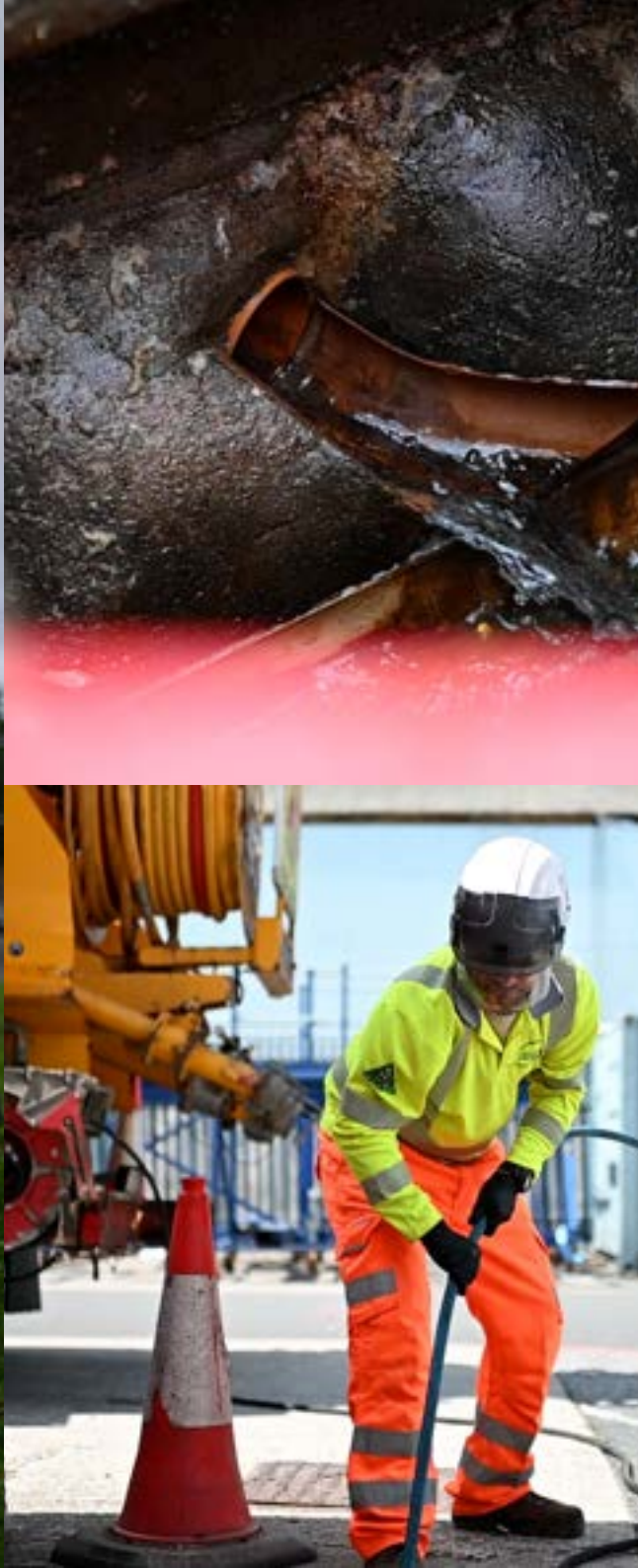
Our civil engineering division collaborates closely with key partners across the supply chain to execute large framework schemes and responsive projects, spearheading crucial enhancements across the wastewater network in the southwest. From thorough planning to seamless execution and every step in between, our cohesive team works in tandem to deliver comprehensive solutions tailored to meet the needs of our clients.

- Design & build works
- Pressure pipelines: small to large diameter
- Cross-country pipelines 4km+
- Hppe pipe welding & electrofusion jointing
- Bolted flanged di pipework
- Gravity sewers & manhole chambers
- Tank construction pre-fabricated & in-situ
- Deep excavation works
- Temporary works installation
- Pump station construction
- Shuttering & concrete works
- Confined space works

FIND OUT MORE.



Glanville
CIVILS



OVERVIEW

As a leading contractor in drainage, environmental and waste management solutions, Glanville Cleansing offers top-tier cleansing services for commercial and domestic clients throughout the South West of England.

Equipped with a versatile fleet comprising tankers, recyclers, and jetting vehicles, our dedicated workforce delivers professional cleansing services using cutting-edge equipment, ensuring that each task is executed to the highest standard. Our comprehensive approach includes inspections, maintenance, and cleansing, providing clients with an all-in-one service package.

Employing state-of-the-art, high-pressure jetting systems, we provide adaptable solutions for every High-Pressure Water jetting project, ensuring efficiency and effectiveness in every endeavour.

- Desilting, root cutting, fat removal & descaling of pipelines, culverts, conduits & vessels.
- Deep lift suction works including wet wells, shafts, mines
- Pumping stations
- Septic tank emptying
- Blockage clearance
- Gully cleansing

FIND OUT MORE.

OVERVIEW

Trenchless solutions have long been a speciality at Glanville Environmental. By blending our wealth of knowledge, expertise, and experience with a commitment to innovation, we collaborate closely with our clients to execute crucial projects, ensuring the integrity of the wastewater network across the South West.

Our team of skilled gangers and operatives are experts at assessing each situation meticulously, striving to minimise disruption while conducting essential sewer repair and rehabilitation. Before commencing work, we conduct thorough pre-work surveys to evaluate the most suitable solution. Whenever feasible, we prioritise trenchless solutions, recognising their efficiency and effectiveness in preserving infrastructure integrity, ensuring sustainability and minimal disruption are at the forefront of construction activities.

Collaborating with industry experts and technical innovators, we've made substantial investments in acquiring top-of-the-line equipment to provide cutting-edge lining solutions across the region. Furthermore, our teams undergo rigorous training to ensure they are highly skilled at deploying this equipment effectively, with optimal outcomes for our clients.

We offer three different varieties of trenchless technology, including –

- Cipp – cured in place pipe
- Pipe bursting
- Resin patch repair

FIND OUT MORE.





OVERVIEW

Glanville CCTV provides professional surveying services throughout the South West of England, catering to diverse environments ranging from sewers and drains to tanks, chambers, and river culverts. Harnessing the power of cutting-edge technology, we offer comprehensive asset investigation, assessment, maintenance, and structural surveys.

Our team of highly experienced and fully qualified surveyors employs the latest innovative equipment to deliver high-definition, full-colour surveys of even the most inaccessible assets.

At Glanville Environmental, we pride ourselves on being pioneers in the field of CCTV surveys. We provide survey information as a complete electronic package, including an optional Cloud-based storage system. This feature grants our clients the convenience of accessing survey data anytime, anywhere with an internet connection, offering unparalleled flexibility and ease of use.

- CCTV condition reports of pipelines from 40mm to >2,000mm
- Manhole inspections including level surveys, condition reports, and confined space entries.
- Mapping of underground pipe networks
- Locating and tracing underground assets and defects
- Build over pre-surveys for building or extension planning
- Pre-maintenance inspections of new developments
- New connection surveys for new developments
- Private property drainage surveys
- Mapping of complex treatment works
- Reactive response to pollution and flooding investigations



FIND OUT MORE.

OVERVIEW

Glanville Training Academy offers a professional and enriching experience tailored to meet the diverse training needs of the construction industry. With over three decades of expertise, Glanville Training Academy stands as your local specialist in delivering accredited and professional construction and safety training courses.

Our Plymouth-based training centre is a purpose-built facility where our courses are delivered by experienced industry specialists committed to providing engaging, informative, and accredited sessions to our valued clients. We boast an extensive array of courses designed to cater to a broad spectrum of needs, whether you're seeking to enhance your existing skill set or embark on a new career path. At Glanville Training, all our courses are fully accredited and delivered by industry professionals, ensuring the highest quality standards.

Furthermore, we offer free quotes, flexible delivery options, and the convenience of on-site or off-site training, ensuring accessibility and convenience for all our clients.

- Confined Space
- Health & Safety
- Construction
- Plant & Machinery
- Streetworks
- First Aid

Visit: www.glanvilletraining.co.uk or call 07923 235852

FIND OUT MORE.



Name	Time In	Time Out	On	HS	Co	Ln
Ben	12:14	2:07	0	0	6	0
		2:18	0	0	5	0
Ryley	12:18	2:08	0	0	0	0
		2:1	0	0	0	0
Joe	12:21	2:01	0	0	0	0
		2:1	0	0	0	0
Jack						
	12:10	2:1	0	0	0	1
James		2:1	0	0	0	

Ben Rangley

HS Co On
0 0 0 2:1



OVERVIEW

At Glanville Geospatial, our expertise in all areas of measurement, monitoring and inspection means that we can offer a complete spectrum of services, encompassing topographic surveys, confined space drone inspections, utility mapping, laser scanning and more. Every project showcases our dedication to innovative solutions and the highest possible quality deliverables.

By using a customised approach, we give our clients the assurance they need that the product meets their expectations. Our easy-to-understand deliverables help our clients make critical decisions with confidence and our integrated products mean we provide a cradle to grave service throughout a project's life cycle.

- Topographic surveys
- Confined space drone surveys
- Unmanned aerial surveys
- Utility mapping
- Laser scanning
- Bim & modelling
- 4D monitoring surveys
- Hydrographic surveys
- Geophysical surveys
- Site engineering/setting out
- GIS asset mapping

FIND OUT MORE.



WASTE MANAGEMENT

Glanville Environmental owns its a fully licensed waste treatment facility and always follows environmentally responsible practices and recycles where possible. We specialise in collecting and treating waste with minimal environmental impact and offer a unique and highly efficient service utilising our Treatment Plant.



PROPERTIES

Glanville Properties have a professional, talented, and highly focused compact team that will ensure a high-end, quality finish on all projects. Whether you're looking for a bespoke property build, extension, or patio, we can assist with all aspects of your project, from planning to designing, budgeting, and construction.

CONFINED SPACE WORKING

With over 40 years of experience in construction, Glanville Environmental are specialists in confined space working and can provide comprehensive entry, access, and rescue services.

We have an experienced workforce that has undertaken extensive high, medium, and low-risk confined space training to ensure they carry out the task safely and effectively with even the most technically demanding briefs fulfilled to the highest of standards.

Alongside Glanville Training Academy, we can not only ensure your workforce has the confined space qualifications they need to get the job done safely and confidently; we can also provide teams that carry out a range of confined space services including:

- CCTV inspections
- Sewer & culvert repairs
- Blockage, silt & debris removal
- Confined space surveys
- Confined space rescue
- Overseer/top man services
- Confined space training: high, medium & low risk

FIND OUT MORE.





OUR COMMITMENT TO SUSTAINABILITY.

Committed alongside our key partners and supply chain in the water industry, our 'Further Than Zero' campaign looks at bringing carbon emissions down to below zero with the hope of becoming carbon negative.

Our focus on sustainability across the company looks at both reducing carbon footprint immediately and providing a comprehensive plan on how we can sustain this for the future.

VIEW OUR PLAN.



VIEW OUR CASE STUDIES.

Find out more about the projects we've been working on [here](#).



OUR PEOPLE.

As a family run company for over 40 years we understand that people make a business, and our people are our best asset. A career at Glanville provides security, development, support and success and our futureproof workforce deliver the very best day in day out from those on the ground to behind the scenes.

We want you to succeed at Glanville and that's why we offer comprehensive training and ongoing development to all employees including an apprenticeship scheme that focuses on developing a new generation of workforce with future-ready skills.





APPRENTICESHIPS.

We provide a diverse selection of apprenticeships aimed at nurturing and empowering the next generation of talent within Glanville Environmental. Whether it's in groundworks, mechanics, administration, or beyond, we offer a tailored career pathway for individuals of all skill sets, equipping them with the tools and hands-on experience necessary to set them up for life.



www.glanvilleenvironmental.com

T: 01752 690400 | E: email@glanvilleltd.co.uk

Head Office, Unit 2 Central Court Central Avenue, Lee Mill Industrial Estate, Ivybridge, Devon, PL21 9PE